

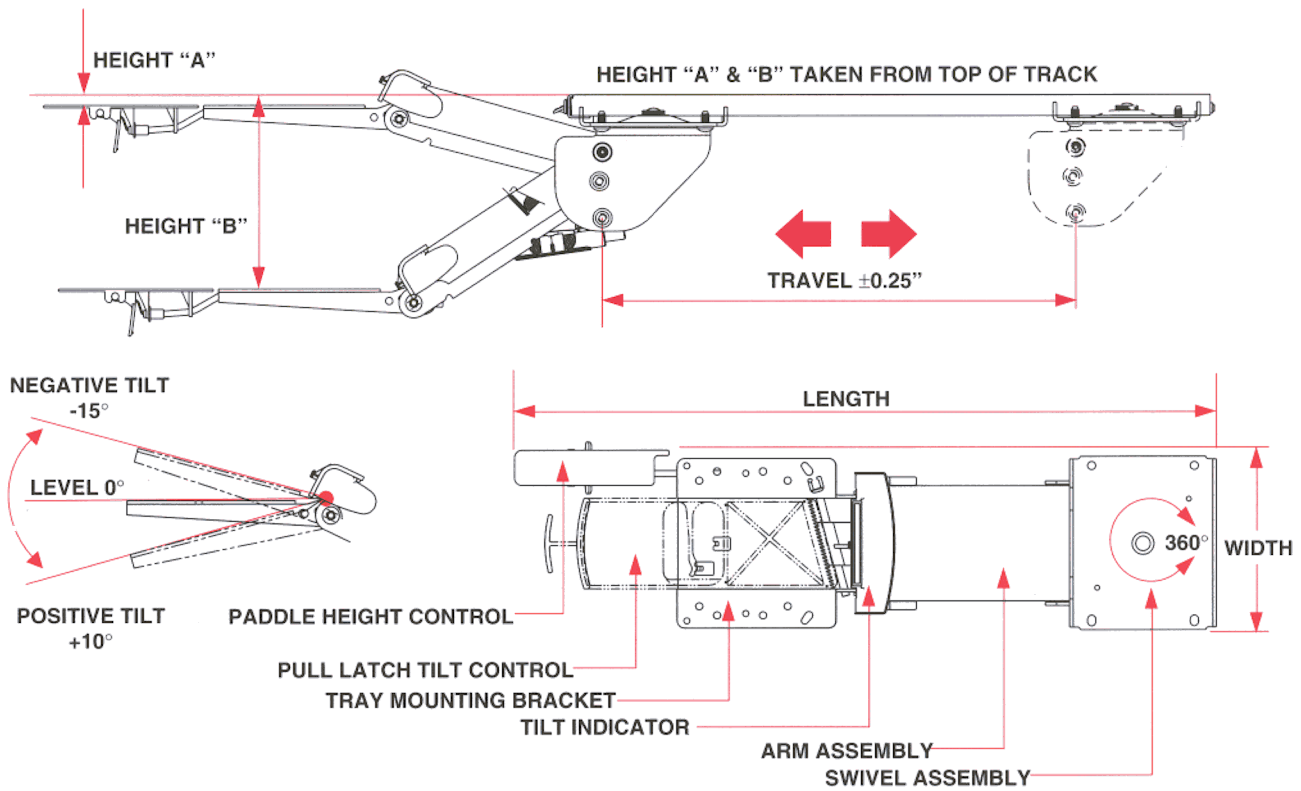
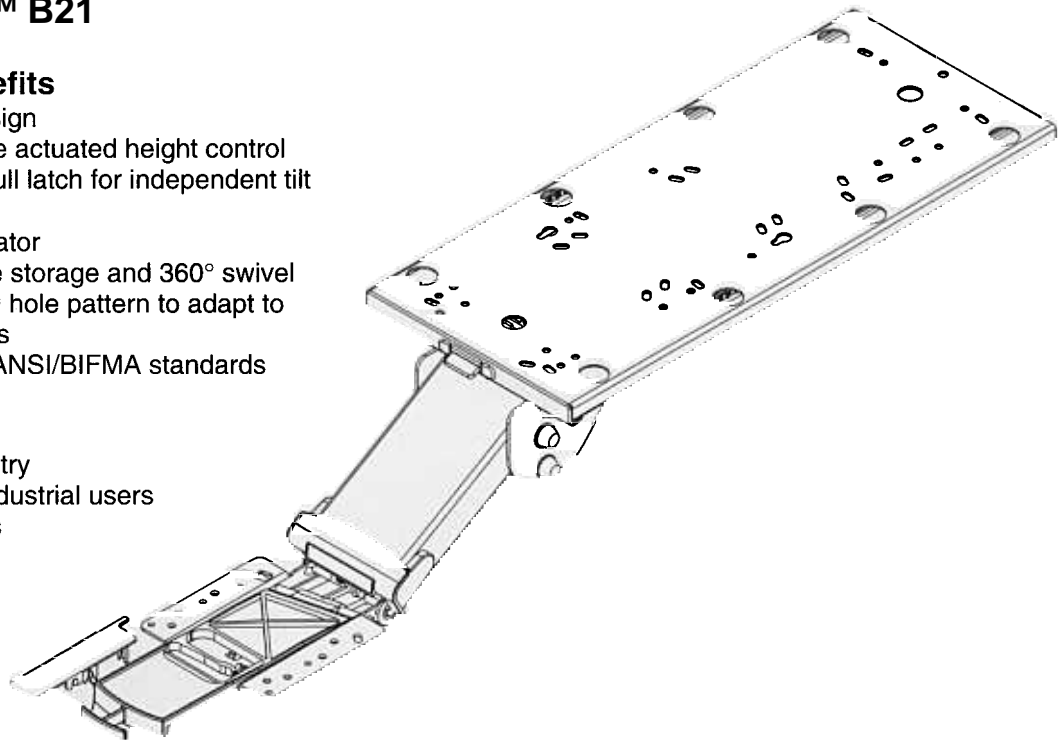
## ERGOFLIER™ B21

### Features & Benefits

- Stable, durable design
- Finger touch paddle actuated height control
- Finger controlled pull latch for independent tilt adjustment
- Tray tilt angle indicator
- Under work surface storage and 360° swivel
- Universal tray head hole pattern to adapt to all CompX platforms
- Meets or exceeds ANSI/BIFMA standards

### Applications

- Typing and data entry
- Commercial and industrial users
- Corner applications



MODEL	(A) HEIGHT	(B)	WIDTH	LENGTH	TRAVEL	STORAGE	FINISH	WEIGHT
EF-BT-21	-0.63"	8.5.0"	5.75	22.4"	15.8"	21.75" Ball Bearing	Black Wrinkle Paint	17.38 lbs

**NOTE:**

1. Weight = packaged shipping weight per unit.
2. Specifications are subject to change without notice.